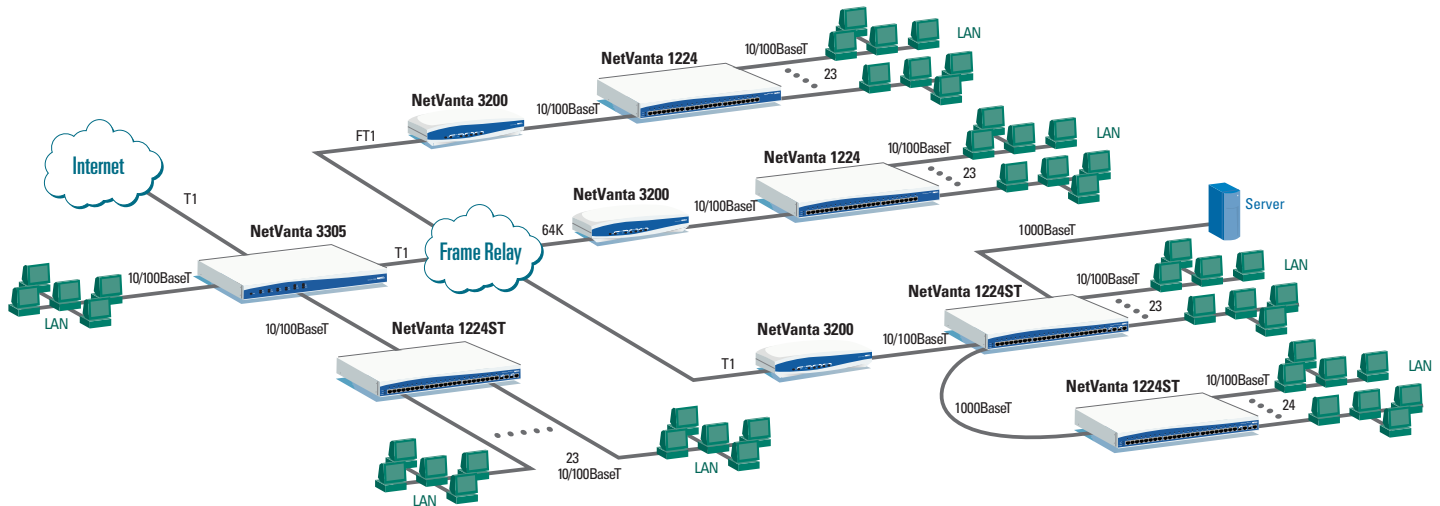


Remote Office Internetworking

Ethernet Switching and Access Routing

Featuring
NetVanta 1000 Series



The NetVanta™ 1224 and 1224ST managed Ethernet switches support cost-effective Layer 2 switching applications for enterprise LAN segmentation. Implementing a NetVanta 1000 Series switching solution provides users with more bandwidth and better performance for growing networks. Ideal for the switch closet or computer room, these products support industry-standard switching technology for integration into existing networks or rapid connectivity in new installations. Both products support 24 Fast Ethernet ports. In addition, the NetVanta 1224ST supports dual Gigabit uplink ports for link redundancy and stacking applications.

In this application, the NetVanta 1224 and 1224ST are used at branch offices to connect network users and segment the LAN for more efficient operation. Each switch port may be configured for 802.1Q VLAN functionality to provide separation of broadcast domains and functional work areas. Spanning Tree or Rapid Spanning Tree is enabled for fast convergence and loop resolution. 802.1p traffic prioritization allows network managers to ensure mission critical or delay-sensitive applications, such as VoIP, receive the bandwidth required for operation.

Stacking capability in the NetVanta 1224ST provides more user ports at larger branch offices and Gigabit uplinks for access to network servers. NetVanta 1000 Series switches are connected to ADTRAN™ NetVanta 3000 Series access routers for links to corporate resources and the Internet. Each router is configured for a T1/Fractional T1 WAN connection and is linked to a NetVanta 1000 Series switch using Fast Ethernet. These NetVanta internetworking products support remote management and are easily configurable via a familiar Command Line Interface (CLI) using the ADTRAN Operating System (OS) or via a web-based Graphical User Interface (GUI) from a standard web browser using the management IP address of the switch. ADTRAN internetworking solutions are backed by industry-leading toll-free technical support and service and a five-year North American warranty.

SOLUTION FEATURES

- Cost-effective managed Layer 2 switching
- Gigabit uplink ports for server access
- Quality of Service (802.1p)
- Network segmentation and VLAN trunking with 802.1Q VLANs
- Standards-based switching technology
- Complete LAN/WAN solution
- Familiar CLI with ADTRAN OS
- Web-based GUI for configuration and remote management
- Industry-leading service and support

ADTRAN®



ADTRAN, Inc.
Attn: Enterprise Networks
901 Explorer Boulevard
Huntsville, AL 35806

P.O. Box 14000
Huntsville, AL 35814-4000

256 963-8000 voice
256 963-8699 fax
256 963-8200 fax back

General Information
800 9ADTRAN
info@adtran.com
www.adtran.com

**Pre-Sales
Technical Support**
800 615-1176 toll-free
application.engineer@adtran.com
www.adtran.com/support

Where to Buy
877 280-8416 toll-free
channel.sales@adtran.com
www.adtran.com/where2buy

**Post-Sales
Technical Support**
888 423-8726
support@adtran.com
www.adtran.com/support

**ACES Installation &
Maintenance Service**
888 874-ACES
aces@adtran.com
www.adtran.com/support

International Inquiries
256 963 8000 voice
256 963-6300 fax
international@adtran.com
www.adtran.com/international

**For the regional office
nearest you, visit:**
www.adtran.com/contact



ADTRAN is an
ISO 9001:2000 registered company.



ADTRAN is a
TL 9000 registered company.
EN570B September 2003
Copyright © 2003 ADTRAN, Inc.
All rights reserved.

NetVanta 1224 and 1224ST

Managed Layer 2 Ethernet Switches

Product Specifications

Physical Interface

24 Fast Ethernet Ports

- 10/100BaseT
- RJ-45
- Auto rate/duplex/MDI/MDI-X

Dual Gigabit Ethernet Ports (1224ST Only)

- Built in 10/100/1000BaseT for copper connectivity
- SFP slots for optical connectivity

Console Port

- DB-9, RS-232

Performance

- Non-blocking
- 8,000 MAC addresses
- 16 MB memory shared by all ports

Maximum Forwarding Bandwidth

- 4.8 Gbps (1224)
- 8.8 Gbps (1224ST)

Diagnostics

Front Panel Status LEDs

- Power
- LAN: link, activity

Port Statistics

- Number of TX/RX bytes, frames, collisions
- Number of under/oversized frames, CRC errors, jabbers
- Frame size analysis

Port Mirroring

Spanning Tree Support

- 802.1D Spanning Tree
- 802.1w Rapid Spanning Tree

Flow Control

- Backpressure jamming for half-duplex links
- 802.3x flow control on full-duplex links

Stacking (1224ST only)

- Up to 16 switches/stack
- Utilizes built-in 1000BaseT or SFP interfaces

Link Aggregation

- 802.3ad Link Aggregation
- Support for six trunk groups
- Trunk groups consist of up to eight access ports or two uplink ports

Class of Service

- Enforces 802.1p priorities
- Four output queues per egress port
- Weighted Round Robin (WRR) or Strict Priority scheduling

VLAN Support

- Port-based VLANs
- 802.1Q tagged trunked VLANs
- Support for up to 255 active VLANs



Web-based GUI

Storm Control

- Broadcast, Unicast, and Multicast

Management

Management Methods

- Console
- Telnet CLI
- Web-based GUI
- SSH CLI

Management Security

- Multi-level access control
- Port security
- RADIUS AAA

Management Features

- NTP (Network Time Protocol)
- TFTP/FTP firmware update
- Dual firmware images stored in unit
- DHCP client/server
- Configuration script download

Environment

- **Operating temperature:** 0° to 50 °C (32° to 122 °F)
- **Storage temperature:** -20° to 70 °C (-4° to 158 °F)
- **Relative humidity:** Up to 95%, non-condensing

Physical

- **Chassis:** 1U, 19" rackmountable metal enclosure
- **Dimensions:** 1.7" H, 17.2" W, 7.8" D
- **Weight:** 7 lbs.
- **AC power:** 100–250 VAC, 50/60 Hz
- **Power dissipation:** 25 Watts (85 BTU/hour)

Agency Approvals

- FCC Part 15 Class A, UL 1950/CSA, CE Mark, C-tick

Ordering Information

Equipment	Part #
NetVanta 1224	1200500L1
NetVanta 1224ST	1200504L1
NetVanta 1000BaseSX SFP (LC Connectors)	1200480L1
NetVanta 1000BaseLX SFP (LC Connectors)	1200481L1



NetVanta 1224



NetVanta 1224ST



NetVanta 1224/1224ST backplane

Specifications subject to change without notice. ADTRAN and NetVanta are trademarks of ADTRAN, Inc. All registered trademarks and trademarks mentioned in this publication are the property of their respective owners.