

**Enterprise-class,  
Layer 2 10/100 switch  
for small and medium  
businesses, voice ready  
with PoE and advanced  
features for network  
control and flexibility**

## OVERVIEW

The “smart” voice-ready 3Com® Baseline Switch 2426-PWR Plus is a web-managed Layer 2 10/100 Ethernet switch that delivers enterprise-class features, customized and priced for small- and mid-sized organizations. With an easy-to-use switch interface and advanced features (VLANs, IEEE 802.1X authentication and Rapid Spanning Tree), twenty-four 10/100 and two dual-purpose Gigabit ports, and Power over Ethernet (PoE), the Baseline Switch 2426-PWR Plus is the most cost-effective way to provide a converged network.

## KEY BENEFITS

### LAYER 2 SWITCHING WITH ADVANCED FEATURES

The Baseline Switch 2426-PWR Plus has twenty-four PoE-enabled 10/100 and two dual-purpose Gigabit ports (copper or SFP-based fiber) to connect to high-performance computers, servers, or network backbones.

The switch provides non-blocking performance—all ports perform at wirespeed which helps to eliminate network traffic bottlenecks. Manual link aggregation allows ports to be grouped together to form an ultra-high-bandwidth connection that greatly expands bandwidth capacity to the network core.

This “smart” switch has the features that help build a voice ready network, with support for auto-voice VLAN, SNMP-based management, IGMP snooping and query and IEEE 802.1X for strengthening security.

The Baseline Switch 2426-PWR Plus also supports Spanning Tree and Rapid Spanning Tree, traffic prioritization, priority queuing and VLANs. These switching features ensure optimal use of available bandwidth as traffic flow is directed according to the needs of the business.

### POWER OVER ETHERNET

The Baseline Switch 2426-PWR Plus provides inline power to attached devices—access points, Voice over IP (VoIP) phones, IP security cameras, etc.—via industry-standard IEEE 802.3af Power over Ethernet over a single Ethernet cable, resulting in significant deployment cost savings.

### NO SWITCH SETUP REQUIRED

This Baseline Plus switch is operational straight out-of-the-box; as long as default settings are acceptable, there is no need to configure the switch. If desired, the switch can be configured using a web browser or SNMP management software.



3Com Baseline Switch 2426-PWR Plus

## KEY BENEFITS

(CONTINUED)

### SMART BROWSER-BASED USER INTERFACE

For networks that require more control, the switch management interface—completely redesigned to enhance useability—allows even novice users to quickly and confidently configure the switch during initial setup or normal operation.

In addition, the web interface features individual port-traffic monitoring (port mirroring) and a unique, quick-glance switch status review. A cable diagnostic tool lets users troubleshoot basic connectivity problems via the web management interface further simplifying network installation.

### THREE YEAR HARDWARE WARRANTY

3Com gives a Three Year Limited Hardware Warranty on the Baseline Switch 2426-PWR Plus. Advance Hardware Replacement, with Next Business Day shipment in most regions, is provided upon product registration. See [www.3com.com/warranty](http://www.3com.com/warranty) for details.

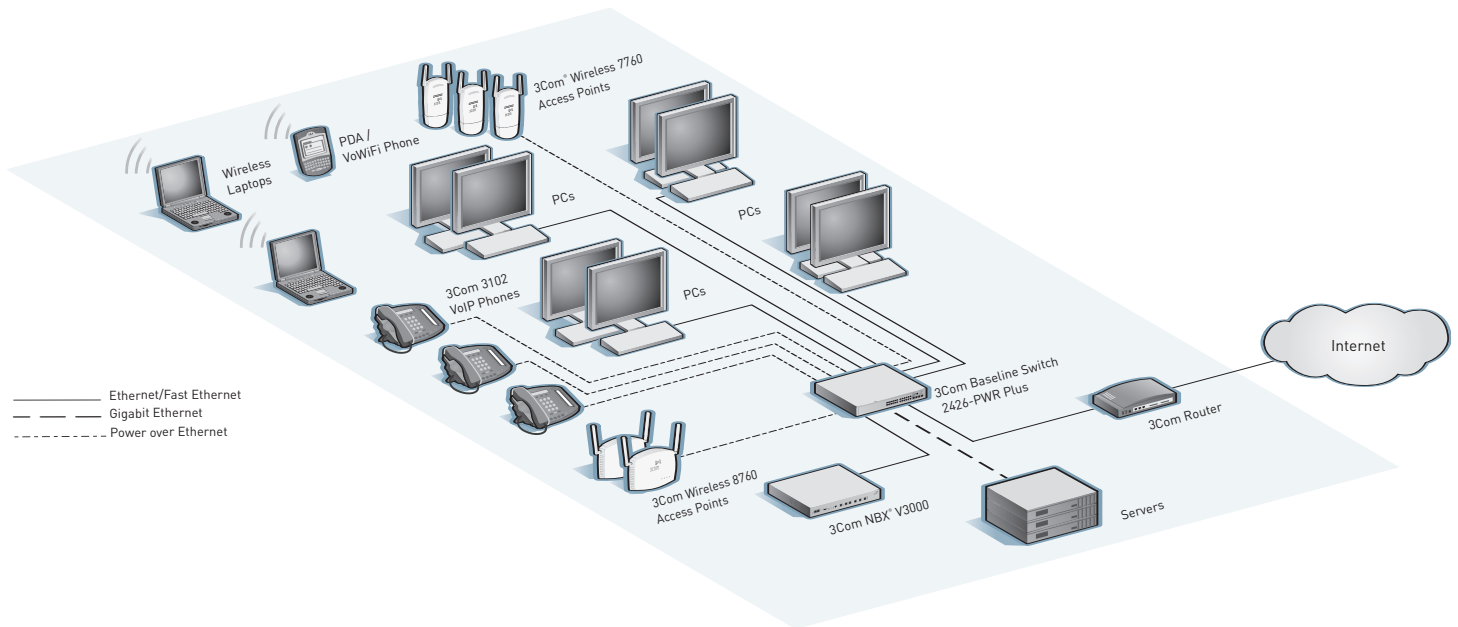
### SERVICE

3Com products are backed by 3Com Global Services and authorized partners with demonstrated expertise in network assessment, implementation and maintenance. Ask about which 3Com Network Health Check, installation services and maintenance service packages are available in your area.

## FEATURES HIGHLIGHTS

Feature	Description
Traffic prioritization and auto-voice VLAN	IEEE 802.1p Class of Service (CoS) and automatic assignment of VoIP traffic to dedicated VLANs help ensure that critical time-sensitive traffic gets the priority needed for quality communications.
Outstanding value	Take advantage of flexible, configurable and powerful switching that costs not much more than an unmanaged switch.
Flexible Gigabit uplinks	Choose to daisychain multiple units together via the built-in copper Gigabit uplink ports or connect to a network backbone via SFP-based fiber modules.
Enhanced browser-based user interface	Extremely easy-to-use user interface allows even the most novice users to configure the switch during initial setup and monitor it during normal operation.
PoE support	Provides power for IP phones, wireless LAN access points, and other compliant devices over the same cable used for data; lowers total cost of ownership since there is no need to run additional electrical wiring.
VLANs	Segment the network by grouping users based on their data or traffic exchange requirements. This ensures optimal use of available bandwidth as traffic flow is directed according to the needs of the business.
Manual link aggregation (trunking)	Group together any number of ports to form an ultra-high-bandwidth connection to the network backbone; help prevent traffic bottlenecks.
Traffic monitoring (port mirroring)	Administrators can examine suspect data streams received on any port by mirroring the data stream to a monitoring port.
IEEE 802.1X network access control	Provides standards-based security combined with local authentication.
SNMP support	Switch can be managed with SNMP-compatible tools.
Rapid Spanning Tree Protocol (RSTP) support	Improves network compatibility, scalability and availability.
IGMP snooping and query	Multicast filtering optimizes network performance, instead of flooding traffic to all ports.
PoE configuration	PoE power can be enabled or disabled per unit and per port; power can also be limited per port.
Cable diagnostics	Easy-to-use browser based tools, allowing the users to remotely detect cable issues.

## BASELINE SWITCH 2426-PWR PLUS IN A CONVERGED NETWORK



## VOICE READY NETWORK

3Com Voice Ready Networks provide an innovative and holistic approach to assessing, recommending and implementing a converged network, solving the most vexing challenges that confront IT managers as they deploy Internet Protocol (IP) telephony systems. With 3Com Voice Ready Networks, organizations can optimize network infrastructure for realtime voice and video traffic, ensure secure communications and protect business assets.

The Baseline Switch 2426-PWR Plus is an integral component of this approach, offering:

- › Automatic assignment of voice traffic to separate VLANs
- › IEEE 802.1p prioritization and 802.1Q VLANs
- › IEEE 802.1X authentication
- › Two dual-personality Gigabit SFP ports
- › SNMP support
- › Power over Ethernet

## SPECIFICATIONS

### CONNECTORS

26 total available ports, comprised of:  
24 auto-negotiating 10BASE-T/  
100BASE-TX configured as auto  
MDI/MDIX  
2 dual-personality Gigabit port pairs,  
configurable as 10BASE-T/100BASE-TX/  
1000BASE-T or SFP

### PERFORMANCE

8.8 Gbps switching capacity, max.  
6.6 Mpps forwarding rate, max.  
Wirespeed performance across ports  
Store-and-forward switching

### LAYER 2 SWITCHING

4,096 MAC addresses in address table  
64 Port-based VLANs (IEEE 802.1Q)  
Manual link aggregation: 2 10/100  
trunks with 4 ports per trunk, max.;  
additional trunk for SFP ports  
Auto-negotiation of port speed and  
duplex  
IEEE 802.3x full-duplex flow control  
IEEE 802.1D Spanning Tree Protocol  
(STP)  
IEEE 802.1w Rapid Spanning Tree  
Protocol (RSTP)  
Internet Group Management Protocol  
(IGMP) snooping on Layer 2 interfaces  
Multicast filtering

### CONVERGENCE

4 hardware queues per port  
Weighted Round Robin queuing  
IEEE 802.1p Class of Service/Quality  
of Service (CoS/QoS) on egress  
Auto VLAN assignment for voice  
traffic determined by vendor OUI

### SECURITY

IEEE 802.1X Network login

### POWER OVER ETHERNET

IEEE 802.3af  
180W per switch, max.

### MANAGEMENT

Web-based configuration for:

- Port speed and duplex configuration
  - Spanning tree
  - VLANs
  - IGMP snooping
  - Link aggregation
  - IGMP query
  - Traffic monitoring
  - Broadcast storm control
  - SNMP v1 and v2
- Compatible with SNMP management  
tools like 3Com Network Supervisor  
and 3Com Network Director

### LED INDICATORS

Module active, power, network  
traffic/duplex mode, link status/speed

### AT-A-GLANCE TRAFFIC MONITORING

Ports: active, enabled, disabled  
Modules: present, active

### POWER SUPPLY

Input voltage: 100-240 VAC, 50/60 Hz  
Current rating: 3A, max.  
Power consumption: 205W, max.  
Power dissipation: 154 BTU/hr, max.  
Power inlet: IEC 320

### DIMENSIONS

Height: 4.4 cm (1.7 in or 1 RU)  
Width: 44.0 cm (17.3 in)  
Depth: 23.8 cm (9.4 in)  
Weight: 3.2 kg (7.1 lb)

### ENVIRONMENTAL REQUIREMENTS

Operating temperature: 0° to 45°C  
(32° to 113°F)  
Operating humidity: 10 to 95%  
(non-condensing)  
Standard: EN60068 (IEC 68)

### REGULATORY AND AGENCY APPROVALS

Safety: UL 60950-1, EN60950-1, CSA  
22.2 60950-1, IEC 60950-1  
Emissions: EN55022 Class A, FCC Part  
15 Subpart B Class A, ICES-003 Class  
A, VCCI Class A, AS/NZS 3548 Class A,  
Environmental: EN60068 (IEC 68)  
Immunity: EN55024

### IEEE STANDARDS SUPPORTED

IEEE 802.1d Spanning Tree  
IEEE 802.1p Priority Tags  
IEEE 802.1Q VLANs  
IEEE 802.1X Port Security  
IEEE 802.1w Rapid Spanning Tree  
IEEE 802.3 Ethernet  
IEEE 802.3ab Gigabit Ethernet  
IEEE 802.3af Power over Ethernet  
IEEE 802.3u Fast Ethernet  
IEEE 802.3x Flow Control  
IEEE 802.3z Gigabit Ethernet  
ISO 8802-3

### PACKAGE CONTENTS

Switch unit, power cord, self-adhesive  
rubber pads, rack-mount kit, user  
guide, installation CD, warranty flyer

### WARRANTY AND OTHER SERVICES

Three Year Limited Hardware  
Warranty, including fans and power  
supply. Limited Software Warranty for  
90 days. Refer to  
[www.3com.com/warranty](http://www.3com.com/warranty) for details.

Advance Hardware Replacement  
with Next Business Day shipment  
in most regions  
90 days of telephone technical support

## ORDERING INFORMATION

### PRODUCT DESCRIPTION

3Com Baseline Switch 2426-PWR Plus

### 3COM SKU

3C16491

### Transceivers

3Com 1000BASE-SX SFP

3CSFP91

3Com 1000BASE-LX SFP

3CSFP92

Visit [www.3com.com](http://www.3com.com) for more information about 3Com secure converged network solutions.

3Com Corporation, Corporate Headquarters, 350 Campus Drive, Marlborough, MA 01752-3064  
3Com is publicly traded on NASDAQ under the symbol COMS.

Copyright © 2006 3Com Corporation. All rights reserved. 3Com and the 3Com logo are registered trademarks of 3Com Corporation. All other company and product names may be trademarks of their respective companies. While every effort is made to ensure the information given is accurate, 3Com does not accept liability for any errors or mistakes which may arise. All specifications are subject to change without notice.

401005-001 10/06

